

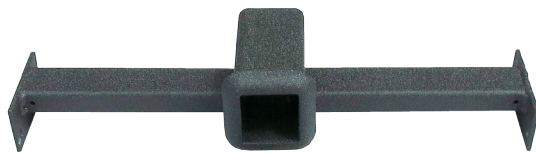


Deluxe Rear Seat Trailer Hitch

Part# D1-013

INSTALLATION INSTRUCTIONS

Included in this Kit



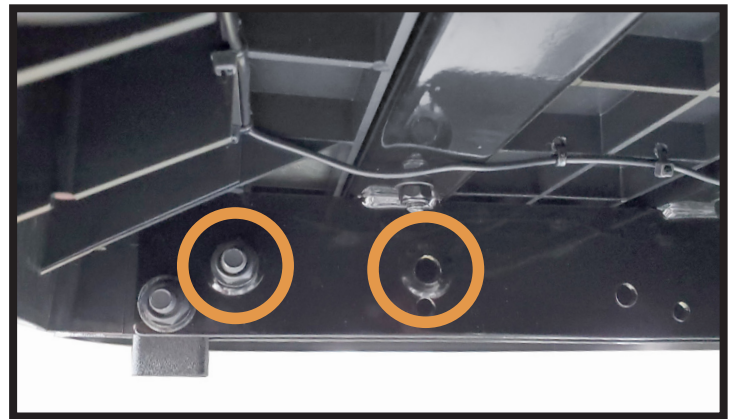
Trailer Hitch
and Hardware



Receiver

STEP 1

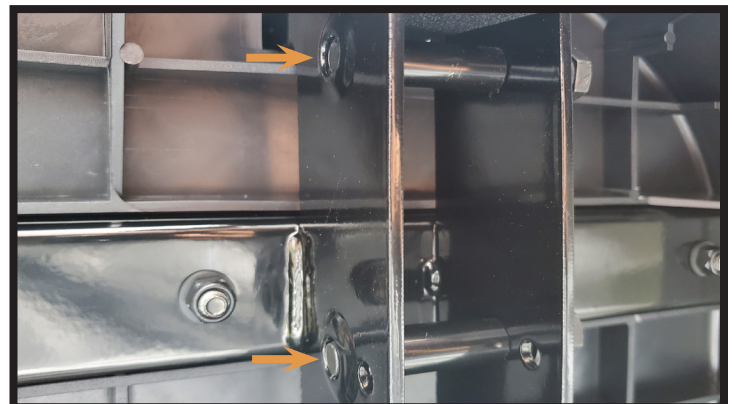
Locate the mounting holes shown on each side. Remove hardware already attached from seat kit if applicable.



STEP 2

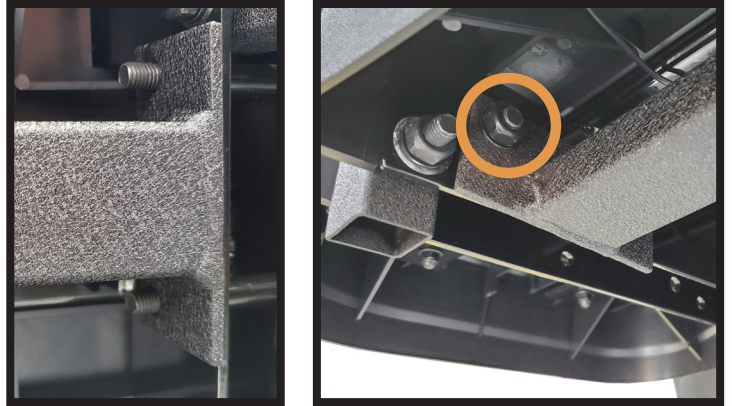
Insert bolts, washer, and sleeve into the mounting holes from Step 1.

Align the end of bolts with footrest support. Do not insert any further in order to have room for the bracket installation.



STEP 3

Place bracket in the footrest and insert all four bolts. Tighten hardware using a 17mm socket and a 16mm wrench.



STEP 4

The trailer hitch should be aligned with the outside edge of the footrest as shown.

Slide the receiver into the hitch. Insert the lock and pin as shown.



INSTALLATION COMPLETE



For more instructions and videos visit sierralsv.com